

the Grassette

TERRE VISTA LLC

The most important thing that I have learned, rather it be in my personal life or business life, is that timing is everything and more importantly God's timing is supreme. With my willingness to stop and listen my decision making is much less emotional and much more rational, anyway, there is a point to my account.

Three years ago our son Kolby came to us and told us that he would be sitting out a year from college his mother and I were afraid that if he did this he might not return to school, but he assured us that this was not the case and he just needed some time to reflect. Because he was 20 we had to let him make his own decision. Later that summer he came to us and told us that he would be returning to school that fall; to which his mother and I were very relieved. However, he told us that he God had laid it on his heart that he was to attend a small Christian College in Springdale, Arkansas. Later we found out that his college only had 150 students, I was fine with that but his mother was not so keen on the idea. You see she is a much deeper thinker than I. She understands that most people meet their potential spouses in college in college and with only 150 students his potential for a marriage partner sure looked bleak. Stephanie has been a mother her entire adult life and she has not had any babies in

MARCH 2010

quite a while, she is ready for the next step, grandchildren. I on the other hand am not quite ready as I am still much, much too young to be a grandparent.

After much thought we gave Kolby our blessing for him to attend Ecclesia College, with or without the ability to find prospective mate, after all college is about getting your education and Kolby has never been worried about finding a girlfriend. We told him that if he is being led to the school then he has to go, parents are important but God knows what is best. Anyway to get to the point of my story when you do what you are led to do great things happen, that is why Stephanie and I are proud to let you all know that Kolby and his girlfriend (Emily) are now engaged and they are to be married on May the 15th. Kolby graduates on May 8th gets married on the 15th our daughter, Alex, graduates high

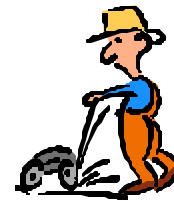
school on the 24th so needless to say our May will be very busy but we welcome this kind of busy, not to mention that May is our absolute busiest time of the season. We will get through it, however, my wife is already in a state of panic.

We both feel that Kolby could not have chosen a better fit for him. But in reality we all feel that God had a bigger roll than any of



VOL. XVIII ISSUE I

us. We are and continue to be blessed, we can hardly wait for what the future brings but as always God's timing is all important. Have a great day!



Turf's Up

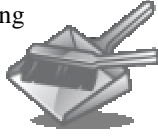
Right now our lawns are still dormant and in a holding pattern until the warmth of the sun stirs new growth. Usually this happens around the end of the month. Typically we like to mow the third week in March; this more than anything is to remove the dead tops of the grass plants thus allowing the sun to warm the earth and returning our lawns to a flush of new growth. At this time we will also be applying the first round of fertilizer and crab-grass preventer. It is not too late to get on our list for fertilization there only about 25 of you that we are still targeting. I still have the prices that I quoted you all in the fall and if you are interested I will be happy to honor that price.

We have also started our spring clean ups and if you are in need of this service please call to get that scheduled as well.

685-1794

Spring Clean up

We are now taking names for our annual spring clean up please give me a call so that you can be on our list we will be starting those services sometime in March and I want to have them wrapped up before April 1st as we will be starting our regular lawn maintenance schedule by then and it will be more difficult to work extra work in that first full month. Please give me a call so that I can get that scheduled right away **685-1794**.



Fertilizing Spring-flowering Bulbs

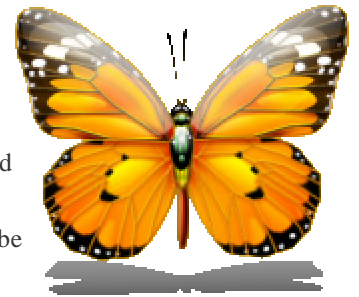
The best time to fertilize spring-flowering bulbs is when foliage emerges in the spring rather than at flowering. Traditionally, gardeners have applied fertilizer during bloom or a bit after, but because bulb roots start to die at flowering; fertilizer applied at bloom is wasted. Roots are active when the foliage first pokes through the ground. Nutrients applied then help the plant produce flowers the following year. If bulbs have been fertilized in the past, there is often plenty of phosphorus and potassium in the soil. It is best to use a soil test to be certain. If the soil needs phosphorus and potassium, use a complete fertilizer (such as 10-10-10, 9-9-6, etc.) at the rate of 2.5 Lbs. per 100 square feet. This would equal 1 rounded teaspoon per square foot. If phosphorus and potassium are not needed, blood meal makes an excellent fertilizer. It should be applied at the rate of 2 lbs. per 100 square feet or 1 teaspoon per square foot. Turf fertilizers such as a 27-3-3 or 30-3-3 can be used, but cut the rate by a third.



Butterfly Gardening

By Ward Upham

Butterfly gardening is becoming more popular with Kansans. Providing for the basic needs of butterflies, such as food, shelter and liquids, will encourage butterflies to visit this summer. There are a number of plants that attract butterflies. However, different species of butterflies prefer different plants. Using a variety of plant material that vary in blooming times of day and year helps attract a diverse group of visitors. Plant groups of the same plant together; a single plant is difficult for a butterfly to detect. If trying to attract a certain species of butterfly, learn which plant(s) that butterfly prefers, and then emphasize that plant in your planting. Annuals that attract butterflies include ageratum, cosmos, French marigold, petunia, verbena and zinnia.

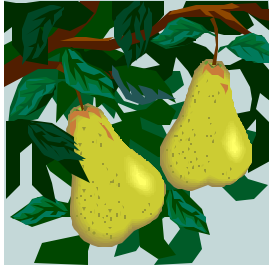


Perennials and shrubs can be split into those that bloom early, mid-season and late. Good choices for those that bloom early are allium, chives, forget-me-not and lilac. Bee balm, butterfly bush, black-eyed Susan, buttonbush, butterfly weed, daisy, daylily, gaillardia, lavender, lily, mint, phlox, privet, sunflower and veronica are fitting picks for mid-season bloom. Late bloomers include aster, glossy abelia and sedum. There are other things you can do to encourage butterflies. Butterflies are cold-blooded and like open areas where they can sun themselves on cool days and shade to cool off when the sun is too intense. Butterflies also need water. A simple way to make a butterfly pool is to take a bucket, fill it with gravel, and bury it to the rim. Now add water, sugar water or sweet drinks so that the butterflies can land on the gravel but still reach the liquid.

Some Fruit Trees Need Pollinators

By Ward Upham

Fruit and nut trees must be pollinated before fruit will develop. If you are planning a fruit planting, be sure to check to see if the type of fruit plant you are buying requires a second variety as a source of pollen. It is important to understand that the different source of pollen is from a different variety, not a second plant or tree of the same variety. For example, Jonathan apple cannot be pollinated by another



Jonathan, but rather another variety such as Golden Delicious. Varieties of apples, sweet cherries, pears, Japanese plums, blueberries and elderberries generally

need a second variety for a pollen source.

There are some exceptions – such as Golden Delicious apple and Stella sweet cherry – that are self-pollinating, and one tree is sufficient.

Apricot, tart or pie cherry, European plum, peach, nectarine, blackberry, raspberry, currant, gooseberry, grape and strawberry plants are all self pollinating, and only one tree or plant is adequate for fruit development. If you have only one fruit tree that requires a pollinator, you can still get fruit by using a bouquet of blossoms from another variety of the same species. For example, suppose you have two pear trees that are different varieties but are too far apart for pollination. One of these pears is self-pollinating but the other isn't. Take prunings from the self-pollinating tree, place them in a container of water and hang them on the sunny side of the tree that needs a pollinator. The bees move from the flowers in the bouquet to the flowers in the tree and pollinate them. The trees must be blooming at the same time, and the bouquet should be replaced every two or three days to keep the flowers fresh and the pollen viable.



To do's

1. Add compost to garden
2. Towards the end of the month start cleaning flowerbeds.
3. Test garden soil for nutrients and pH.
4. Visit the Wichita Garden Show March 3rd thru the 7th.
5. Prune apple trees so that sunlight might reach through.
6. Fertilize woody plants before new growth appears.
7. Plant cool season gardens (lettuce ect.)
8. Core aerate cool-season lawns.

Fungus Gnats

Fungus gnats are small insects (1/8 to 1/10 inch long) that are common in high-organic-matter houseplant soils that are kept moist. Though adults are mosquito-like in appearance, they do not bother humans or pets. It is actually the larvae or maggots that can injure plants by feeding on the roots. Symptoms include sudden wilting, loss of vigor, poor growth or yellowing leaves. Use of sterile media and avoiding overwatering can help prevent infestations. Existing infestations can be controlled with pyrethrins such as bifenthrin (Ortho Rose & Flower Insect Killer) or *Bacillus thuringiensis v. israelensis* (Gnatrol).



Below is the fourth verse of our national anthem. I thought it was quite interesting and I will leave it to you to decide its meaning. I report you decide.

**Oh! thus be it ever, when freemen shall
stand
Between their loved home and the war's
desolation!
Blest with victory and peace, may the
heav'n rescued land
Praise the Power that hath made and
preserved us a nation.
Then conquer we must, when our cause
it is just,
And this be our motto: "In God is our
trust."
And the star-spangled banner in triumph
shall wave
O'er the land of the free and the home of
the brave!**



PEANUT BUTTER SWIRLED BROWNIES

Below is quite possibly the best brownies you will ever taste, I am an expert when it comes to brownies.

You will need:

- ?? 1 pound unsalted butter
- ?? 1 pound plus 12 ounces semisweet chocolate chips, divided
- ?? 6 ounces unsweetened chocolate
- ?? 6 extra-large eggs
- ?? 3 tablespoons instant coffee granules
- ?? 2 tablespoons pure vanilla extract
- ?? 2 1/4 cups sugar
- ?? 1 1/4 cups all-purpose flour, divided
- ?? 1 tablespoon baking powder
- ?? 1 teaspoon kosher salt
- ?? 3/4 cup smooth peanut butter

Directions

Preheat the oven to 350 degrees F. Butter and flour a 12" by 18" by 1" (1/2 sheet pan).

Melt together the butter, 1 pound of chocolate chips, and the unsweetened chocolate in a medium bowl over simmering water. Allow to cool slightly. In a large bowl, stir (do not beat) together the eggs, coffee granules, vanilla, and sugar. Stir the warm chocolate mixture into the egg mixture and allow to cool to room temperature. Make sure to temper the eggs so that they do not scramble.

In a medium bowl, sift together 1 cup of flour, the baking powder, and salt. Add to the cooled chocolate mixture. Toss the remaining 12 ounces of chocolate chips in a medium bowl with 1/4 cup of flour, then add them to the chocolate batter. Pour into the prepared sheet pan. Spoon the peanut butter over the top of the chocolate mixture and using a knife, swirl it through the chocolate mixture.

Bake for 20 minutes, then rap the baking sheet against the oven shelf to force the air to escape from between the pan and the brownie dough. Bake for about 10 to 15 minutes more or until a toothpick comes out clean. **Do not overbake!** Allow to cool thoroughly, refrigerate, and cut into large squares. Enjoy!!!!

HAPPY BIRTHDAY

To my wife Stephanie 2/24/?



March 3rd thru 7th 2010



685-1794

WichitaLawnService.com